



### 8.1 Parts List FAT, FST

| NO. | FAT    | FST    | DESCRIPTION        | QTY | NOTE      |
|-----|--------|--------|--------------------|-----|-----------|
| 1   | 682528 | 682528 | BOLT               | 4   | M6x1x92   |
| 2   | 628010 | 628010 | NUT                | 4   | M6x1      |
| 3   | 681855 | 681855 | SPRING LOCK WASHER | 16  | M6        |
| 4   | 631328 | 631328 | PLAIN WASHER       | 16  | M6        |
| 5   | 709657 | 831323 | MANIFOLD           | 2   |           |
|     |        |        | MANIFOLD ASSEMBLY  | 2   |           |
| 6   | 802235 | 802236 | BODY ASSEMBLY      | 1   |           |
| 7   | 643015 | 643015 | O'RING             | 4   | P-16 PTFE |
| 8   | 709364 | 709364 | VALVE STOPPER      | 4   |           |
| 9   | 709635 | 709635 | VALVE GUIDE        | 4   |           |
| 10  | 771133 | 771133 | O'RING             | 4   |           |
| 11  | 771152 | 771152 | FLAT VALVE         | 4   |           |
| 12  | 709637 | 709637 | VALVE SEAT         | 4   |           |
| 13  | 709469 | 709467 | OUT CHAMBER        | 2   |           |
| 14  | 683055 | 683055 | BALL VALVE         | 1   | 1/4"      |
| 15  | 621103 | 621103 | BOLT               | 8   | M6x1x25   |
| 16  | 771101 | 771101 | BASE               | 2   |           |
| 17  | 771102 | 771102 | CUSHION            | 4   |           |
| 18  | 790911 | 790911 | NAME PLATE         | 1   |           |
| 19  | 771132 | 771132 | ACCESSORY TOOL     | 1   |           |

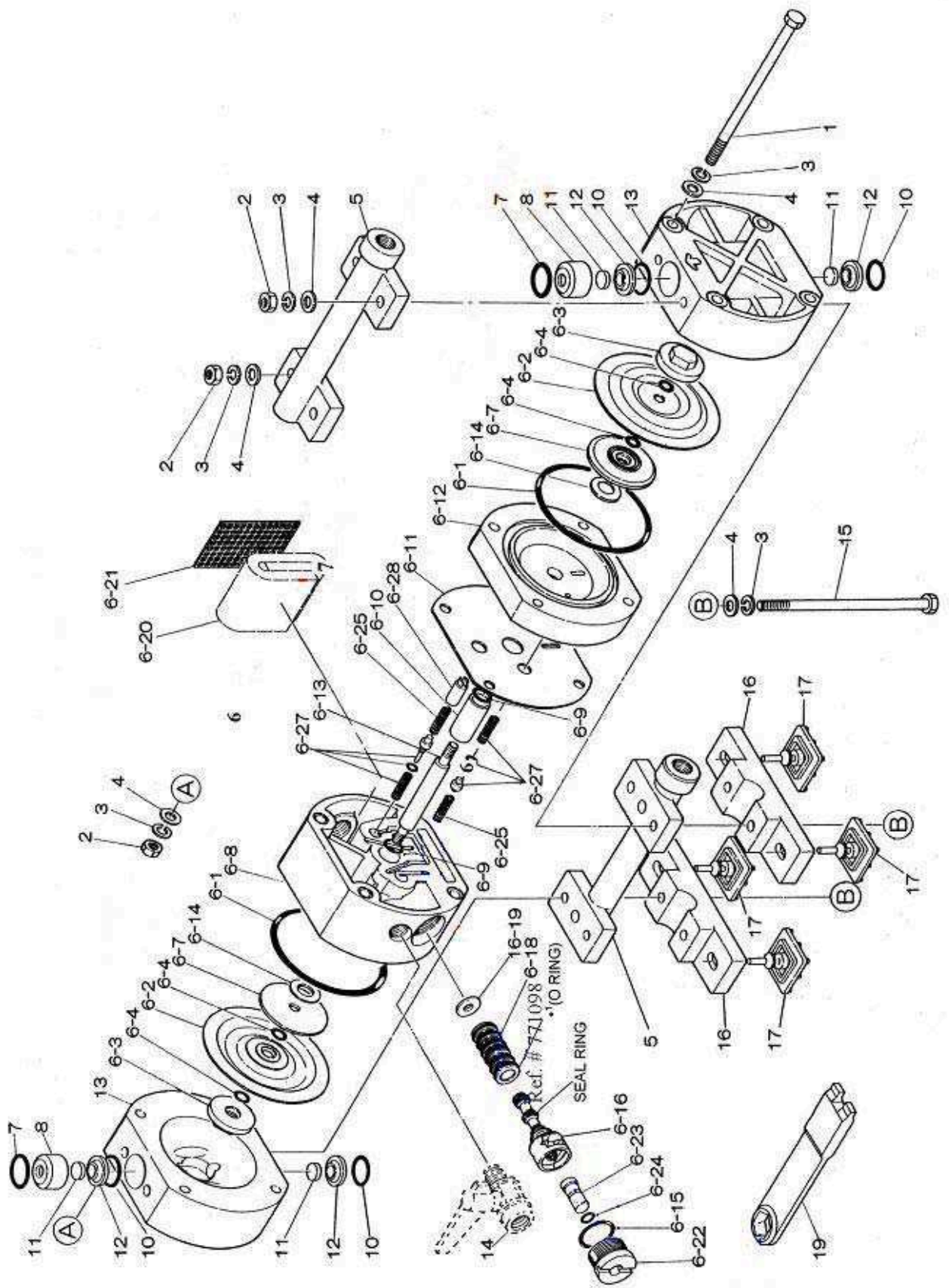
NOTE: NO. 18 (NAME PLATE) IS NOT INDICATED IN EXPLODED VIEW

**802235, 802236 BODY ASSEMBLY**

| <b>NO</b> | <b>FAT</b>                  | <b>FST</b>                  | <b>DESCRIPTION</b>           | <b>QTY</b> | <b>NOTE</b> |
|-----------|-----------------------------|-----------------------------|------------------------------|------------|-------------|
| 6-1       | 640139                      | 640139                      | O'RING                       | 2          | G-70        |
| 6-2       | 771093                      | 771093                      | DIAPHRAGM                    | 2          |             |
| 6-3       | 709477                      | 709476                      | CENTER DISK                  | 2          |             |
| 6-4       | 643003                      | 643003                      | O'RING                       | 4          | P-6 NBR     |
| 6-5       | 683391                      | 683391                      | NUT                          | 2          | M6x1        |
| 6-6       | 684915                      | 684915                      | CONED DISK SPRING            | 2          | M6          |
| 6-7       | 709317                      | 709317                      | CENTER DISK                  | 2          |             |
| 6-8       | 780006                      | 780006                      | BODY A                       | 1          |             |
| 6-9       | <del>640007</del><br>685752 | <del>640007</del><br>685752 | <del>O'RING</del><br>PACKING | 2          | P-10 NBR    |
| 6-10      | 771088                      | 771088                      | BUSHING                      | 1          |             |
| 6-11      | 771980                      | 771980                      | GASKET                       | 1          |             |
| 6-12      | 780001                      | 780001                      | BODY B                       | 1          |             |
| 6-13      | 709316                      | 709316                      | CENTER ROD                   | 1          |             |
| 6-14      | 771239                      | 771239                      | CUSHION                      | 2          |             |
| 6-15      | 640017                      | 640017                      | O'RING                       | 1          | P-20 NBR    |
| 6-16      | 802386                      | 802386                      | C SPOOL VALVE ASSEMBLY       | 1          |             |
| 6-18      | 803214                      | 803214                      | SLEEVE ASSEMBLY              | 1          | *1 (771097) |
| 6-19      | 771096                      | 771096                      | CUSHION                      | 1          |             |
| 6-20      | 771465                      | 771465                      | SILENCER                     | 1          |             |
| 6-21      | 771589                      | 771589                      | MESH                         | 1          |             |
| 6-22      | 771100                      | 771100                      | CAP                          | 1          |             |
| 6-23      | 771099                      | 771099                      | RESET BUTTON                 | 1          |             |
| 6-24      | 640002                      | 640002                      | O'RING                       | 1          | P-5 NBR     |
| 6-25      | 709319                      | 709319                      | SPRING                       | 2          |             |
| 6-26      | 803510                      | 803510                      | PILOT VALVE ASSEMBLY         | 2          |             |
| 6-28      | 771095                      | 771095                      | STOPPER                      | 1          |             |

NOTE: \*1: PART NUMBER MENTIONED ON O'RING FOR SLEEVE ASSEMBLY ONLY.

8.2 Exploded View FPT, FVT



## Parts List

| Parts List FPT, FVT |                        |                        |   |     |            |
|---------------------|------------------------|------------------------|---|-----|------------|
| No.                 | FPT                    | FVT                    | Description   | QTY | Notes      |
| 1                   | 682748                 | 682748                 | BOLT  | 4   | M6x1x139.5 |
| 2                   | 628010                 | 628010                 | NUT   | 8   | M6x1       |
| 3                   | 681855                 | 681855                 | SPRING LOCK WASHER  | 16  | M6         |
| 4                   | 631328                 | 631328                 | PLAIN WASHER  | 16  | M6         |
| 5                   | 780133                 | 780053                 | MANIFOLD  | 2   |            |
| 6                   | 802594                 | 802797                 | BODY ASSEMBLY   | 1   |            |
| 7                   | 643015                 | 643015                 | O'RING  | 6   | P-16 PTFE  |
| 8                   | 772655 (New)           | 771581                 | VALVE STOPPER   | 2   |            |
| 9                   |                        |                        |   |     |            |
| 10                  | 643013                 | 643013                 | O'RING  | 4   | P-14 PTFE  |
| 11                  | 771094                 | 771094                 | FLAT VALVE  | 4   |            |
| 12                  | 771112<br>772738 (New) | 771582<br>772735 (New) | VALVE SEAT<br>VALVE SEAT (for New Replaceable Valve Guides)   | 4   |            |
| 13                  | 771092<br>780231 (New) | 771583<br>780232 (New) | OUT CHAMBER<br>OUT CHAMBER (FOR New Replaceable Valve Guides) | 2   |            |
| 14                  | 683055                 | 683055                 | BALL VALVE  | 1   | 1/4"       |
| 15                  | 682747                 | 682747                 | BOLT  | 4   | M6x1x127   |
| 16                  | 771101                 | 771648                 | BASE  | 2   |            |
| 17                  | 771102                 | 771102                 | CUSHION   | 4   |            |
| 18                  | 790911                 | 790911                 | NAME PLATE  | 1   |            |
| 19                  | 771132                 | 771132                 | ACCESSORY TOOL  | 2   |            |
| 20                  |                        |                        |   |     |            |

NOTE: NO. 18 (NAME PLATE) IS NOT INDICATED IN EXPLODED VIEW

## Parts List

| 802594, 802797 BODY ASSEMBLY |        |        |                      |     |             |
|------------------------------|--------|--------|----------------------|-----|-------------|
| No.                          | FPT    | FVT    | Description          | QTY | Notes       |
| 6-1                          | 640139 | 640139 | O'RING               | 2   | G-70 NBR    |
| 6-2                          | 771093 | 771093 | DIAPHRAGM            | 2   |             |
| 6-3                          | 771089 | 771579 | CENTER DISK          | 2   |             |
| 6-4                          | 643003 | 643003 | O'RING               | 4   | P-6 PTFE    |
| 6-5                          |        |        |                      |     |             |
| 6-6                          |        |        |                      |     |             |
| 6-7                          | 709317 | 709317 | CENTER DISK          | 2   |             |
| 6-8                          | 780006 | 780006 | BODY A               | 1   |             |
| 6-9                          | 685752 | 685752 | PACKING              | 2   |             |
| 6-10                         | 771088 | 771088 | BUSHING              | 1   |             |
| 6-11                         | 771980 | 771980 | GASKET               | 1   |             |
| 6-12                         | 780001 | 780001 | BODY B               | 1   |             |
| 6-13                         | 709316 | 709316 | CENTER ROD           | 1   |             |
| 6-14                         | 771239 | 771239 | CUSHION              | 2   |             |
| 6-15                         | 640017 | 640017 | O'RING               | 1   | P-20 NBR    |
| 6-16                         | 80238  | 802386 | C SPOOL VALVE ASSY   | 1   |             |
| 6-17                         |        |        |                      |     |             |
| 6-18                         | 803214 | 803214 | SLEEVE ASSEMBLY      | 1   | *1 (771097) |
| 6-19                         | 771096 | 771096 | CUSHION              | 1   |             |
| 6-20                         | 771465 | 771465 | SILENCER             | 1   |             |
| 6-21                         | 771589 | 771589 | MESH                 | 1   |             |
| 6-22                         | 771100 | 771100 | CAP                  | 1   |             |
| 6-23                         | 771099 | 771099 | RESET BUTTON         | 1   |             |
| 6-24                         | 640002 | 640002 | O'RING               | 1   | P-5 NBR     |
| 6-25                         | 709319 | 709319 | SPRING               | 2   |             |
| 6-26                         | 803510 | 803510 | PILOT VALVE ASSEMBLY | 2   |             |
| 6-27                         | 771095 | 771095 | STOPPER              | 1   |             |

NOTE)\*1: PARTS NUMBER MENTIONED ON O RING FOR SLEEVE ASSEMBLY ONLY.